



# KING'S COLLEGE

*...a compassionate education from Kinder to Year 12*

*Annual Report 2010*



<b>School Name</b>	<b>King's College</b>
<b>Established</b>	<b>1986</b>
<b>Owned and operated by</b>	<b>Warrnambool Presbyterian School Ltd</b>
<b>Registered School Number</b>	<b>1904</b>
<b>Australian Business Number</b>	<b>94 006 314 030</b>
<b>Year levels offered</b>	<b>Kindergarten to Year 12</b>
<b>Denomination</b>	<b>Presbyterian</b>
<b>Principal</b>	<b>Mr Ian McKay DipT BEd MEd MPA FACE FACEL FAIM MAICD</b>
<b>Chair of Governing Council</b>	<b>Mr Joel Hayward B.Bus (Acc), Adv Dip FS (FP), AFPA</b>
<b>Address</b>	<b>44 Balmoral Road Warrnambool Vic 3280</b>
<b>Telephone</b>	<b>03 5562 0147</b>
<b>Email</b>	<b><u><a href="mailto:reception@kingscollege.com.au">reception@kingscollege.com.au</a></u></b>
<b>Web</b>	<b><u><a href="http://www.kingscollege.com.au">www.kingscollege.com.au</a></u></b>

## **Chairman's Foreword**

The work and ministry of King's College in our community is one of very great significance.

We work to shape and nurture young lives in all aspects of foundational learning and to develop mature young people of skill, character and wisdom. The ministry of our school is to impart and integrate a real knowledge of God and His rule over everything. It is also to model the reality of Christ in all learning and life and this aspect is absolutely central to the success of our work.

Our Annual Report serves a great purpose in highlighting the progress we're making together in building this work of great significance. Many aspects of the report give us cause to be proud of what our school, and our students, have achieved individually and collectively over the year.

This past year has been extraordinarily busy. In addition to all the usual day to day activities our staff and students have been involved in, 2010 was a pivotal year as the school's facilities reached a measure of maturity made possible with the assistance of the Federal Government through its BER funding program. We are proud of our new library, which is the centerpiece of these new facilities.

It was also a pivotal year as the Council worked with our long-standing Principal, Mr Neil Benfell, to plan for his pending retirement. The Council owes a debt of gratitude to Neil for the outstanding work he has done in leading, shaping and inspiring King's College over his 17 years as Principal. The Council instigated and worked through our succession planning program to recruit a new Principal for 2011, and we were very pleased to appoint and welcome Mr Ian McKay to this role.

Sincere thanks is extended to committee and Council members for their energy and time invested into this critical transition point in the life of our school. The Lord, in his goodness, has provided all we have needed to continue advancing our vision for excellence in Christian education.

King's College provides our students and families with a unique and vibrant learning community. Our challenge for the future is to maintain a fresh and compelling vision of what can be accomplished, and continue to build on the firm foundations that have been established. We must continue to grow and develop the school's programs and enhance our commitment to excellence in all aspects of school life. This takes courage, commitment and energy, but above all trust and dependence upon the Lord.

We are encouraged by the faithfulness of God as He has blessed the life of the school and make it our aim to keep working, striving and praying for the vision we all hold dear.

On behalf of Council and the College community, it's a great pleasure to endorse this Annual Report for 2010.



Joel Hayward

**Chairman – Kings College Council**

## Principal's Perspective



Our 2010 Annual Report has been developed to meet the compliance guidelines of the Commonwealth Government.

2010 was a year of growth and change for King's College, providing a strong foundation for future development in 2011 and beyond.

Once more King's College students excelled in national testing programs with year level results above the state average in NAPLAN tests and Year 12 VCE results. Further information on these testing programs can be found later in this report.

During 2010 there were 3 areas of particular note:

- Enrolment has continued a trend of steady growth
- Facilities were enhanced through both Commonwealth funding and College investments
- Long term Principal, Mr Neil Benfell, retired after 17 years of distinguished service

King's College has continued to provide a rich and varied Christian learning environment characterized by:

- a caring and compassionate environment
- consistently high standards academically
- a wide range of opportunities in the Arts and Sport
- a community where Christian service is constantly evident

Ian McKay  
**Principal**

## **School Context**

King's College is a co-educational Christian day school catering for students from Kindergarten to Year 12 living in the Warrnambool District. In 2010 the College catered for a total of 371 students from K-12.

The majority of students come from Christian families from the many churches within the District. All members of staff are Christian men and women who are committed to providing good role models for their students and supporting students to achieve at their personal best.

The College was established in 1986 and is located on an excellent 14 hectare site in the growth corridor of North Warrnambool. The College enjoys modern facilities with a new Sports Centre, Auditorium and Library all being noteworthy.

A great strength of the College is the strong, friendly community relationship between parents and the College.

## **Our Mission**

Our mission is to educate students for a fruitful life, challenged towards academic excellence, with a personal faith in Jesus Christ, a knowledge of his word, a Christian worldview and a vision for serving God in the community.

## **Our Vision**

1. Assisting students to strive to reach their spiritual, academic, emotional and physical potential through a Christ centred curriculum.
2. Providing a Christian educational community where every person is valued and nurtured.
3. Encouraging students to show high integrity and strong character with an ability to discern truth.
4. Developing students to articulate their faith and to become servants and leaders in their chosen fields.
5. Providing the best possible facilities and resources within a safe environment.
6. Encouraging an educational partnership between parents, students and staff.
7. Communicating effectively with parents and the wider community.

## King's College Staff .... An asset contributing to our success

### Teacher Qualifications

All teaching staff at King's College are registered teachers with the Victorian Institute of Teaching and meet the academic requirements of the Institute. A summary of qualifications of 2010 teaching staff:

3 year qualification (Diploma)	5
4 year qualification (Bachelor's Degree)	27
Higher degree (Master's Degree or higher)	2

### Workforce Composition

Male teachers	10	23%
Female teachers	24	55%
Male support staff	1	2%
Female support staff	9	20%
Indigenous staff	0	0%

### Professional Development and Training

All teaching and support staff are provided opportunities to attend professional learning and training sessions. It is estimated that teaching staff spend at least 25 hours during the year undertaking internal and external professional development sessions.

College investment in professional development and training during 2010 was \$10 152.59

### Staff Retention

Teaching staff retention from 2009 was 97%.

In 2010 1 new teaching staff was employed increasing the total teaching staff to 35.

Full time teaching staff	17
Part time teaching staff	18
Full time support staff	2
Part time support staff	8

The average tenure of teaching staff at the end of 2010 was 20 years.

Staff who ceased duties at the end of 2010 were:

Mr Neil Benfell	Retired as Principal but remained employed as a teacher in a part time capacity in 2011
-----------------	---

### Staff Attendance

In 2010 the average attendance by teachers was 95.07%. (2009 93.1%)

The average attendance by support staff was 96.43%. (97.2%)

## Student Data

### Student Attendance

Year Level	Students enrolled	Attendance
Kinder (3yo)	20	--
Preschool (4yo)	33	--
		%
Prep	26	93.4
Year 1	20	93.9
Year 2	26	89.9
Year 3	27	96.3
Year 4	28	94.4
Year 5	22	89.1
Year 6	27	90
Year 7	23	89.5
Year 8	34	93.8
Year 9	27	92.2
Year 10	21	91.8
Year 11	14	92.5
Year 12	23	85.4
<b>Total P-12</b>	<b>318</b>	<b>91.7</b>

*Figures are taken from the School Student Attendance Report as submitted to the Federal Government. This is a representative sample of attendance only (May 2010).*

When students are absent from school parents are expected to provide an explanation for their absence. Where no absence is provided the College office follows up to ensure absence is for an approved reason.

### Student Achievement in Senior School

King's College students have consistently performed very well at a VCE level. The Class of 2010 again achieved results that were above the State average.

	King's	Victoria
% of students completing VCE successfully	96% **	97%
% of students with Study scores > 40	7	8.9
% of ENTER scores above 70	41	30
% of ENTER scores above 80	18	20
% of ENTER scores above 90	9	10
Students undertaking a VET qualification (most over two years)	9	
Students g a VET qualification in 2010	2	

\*\* 1 student did not complete VCE, of all students who did complete 100% were successful

## Post School Destinations

	King's %
University	89.4
TAFE	5.3
Apprenticeship/ Traineeship	5.3
Employment	0
Unemployed	0

19 King's students applied for a tertiary place. 95% of these students received an offer. 100% of students who received an offer received a first round offer.

## National Assessment Program Literacy and Numeracy (NAPLAN)

Students in Years 3, 5, 7 and 9 completed the NAPLAN tests in 2010 as did students in all other Australian schools. Results were very pleasing with, on average, King's College performing above the National Average in all areas.

2010 Results	Reading	Writing	Spelling	Grammar & Punctuation	Numeracy
<b>Year 3</b>					
King's College	431	439	418	455	408
Similar Schools	429	430	410	431	408
National Average	419	419	399	417	395
<b>Year 5</b>					
King's College	547	506	510	549	525
Similar Schools	503	499	497	516	502
National Average	487	485	487	500	489
<b>Year 7</b>					
King's College	576	595	563	584	572
Similar Schools	561	550	554	552	563
National Average	546	533	545	535	548
<b>Year 9</b>					
King's College	601	600	598	639	600
Similar Schools	589	586	591	596	601
National Average	574	568	579	579	585



## **Adding value for our students ...**

Extra curricular opportunities which were provided in 2010 included the following:

### **Music and Performing Arts**

School concerts  
Primary production  
Secondary production  
Performances at Lyndoch and Gillan Park by bands and choirs  
Rotary Club performance by secondary band and choir  
Piano celebration evening  
Open day performances  
City of Warrnambool Eisteddfod bands, solo music and choir

### **Language**

Japanese exchange group

### **Sports**

Clay target shooting  
Equestrian team  
CSSSA swimming  
CSSSA athletics  
CSSSA cross country  
Super 8 cricket  
Lunchtime sporting activities  
Inter-school football  
WDSSSA swimming  
WDSSSA athletics  
WDSSSA cross country  
WDSSSA winter sports (football, netball, soccer, badminton, basketball, table tennis, squash)  
WDSSSA summer sports (tennis, baseball, softball, volleyball, cricket, golf, lawn bowls)  
Indoor bowls competition with good shepherd college

### **Creative Arts**

Set building and painting for Productions  
King's College Art Exhibition Prep – Year 12  
VCE Art Exhibition at Warrnambool Art Gallery  
Duke of Edinburgh Awards

### **Environmental**

Tree planting day  
Primary school vegetable patch

### **Community**

ANZAC Day services  
Red Cross Red Shield appeal  
40 Hour Famine  
Gillan Park visits by primary students

**Public Speaking**

Warrnambool Eisteddfod – Debating, Speech and Drama

Junior Legacy Public Speaking

Plain English Speaking Awards

**Other**

Book week – dress up day

Premier's Reading Challenge

Chess – lunchtime club

There is a very active Parents Club at the College which provides a range of opportunities for parents to become involved in the life of the school:

Family fair

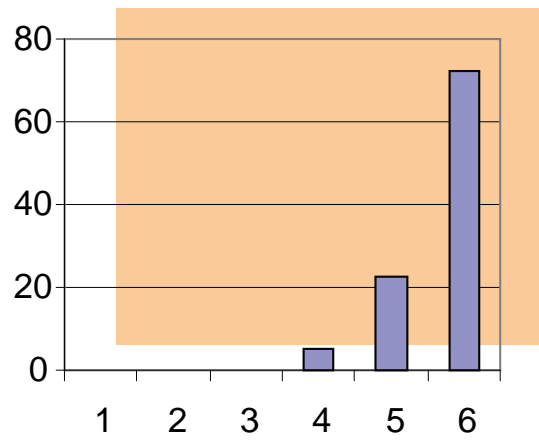
Interval sales for auditorium bookings

Daily helpers within the school community – classroom, canteen, sports events

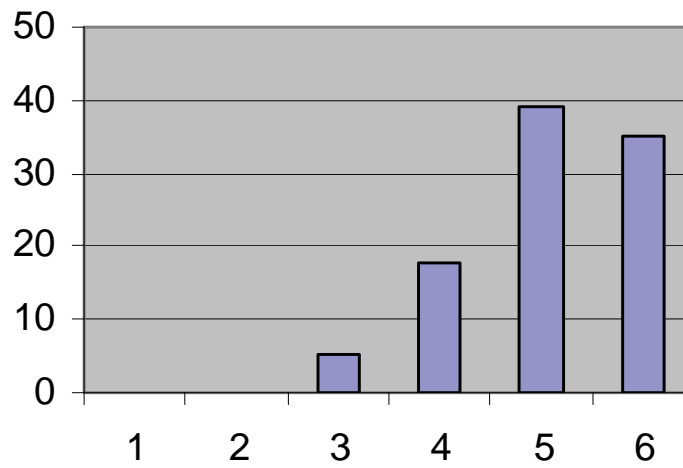
Parents Club committee

## Annual Satisfaction Surveys.....

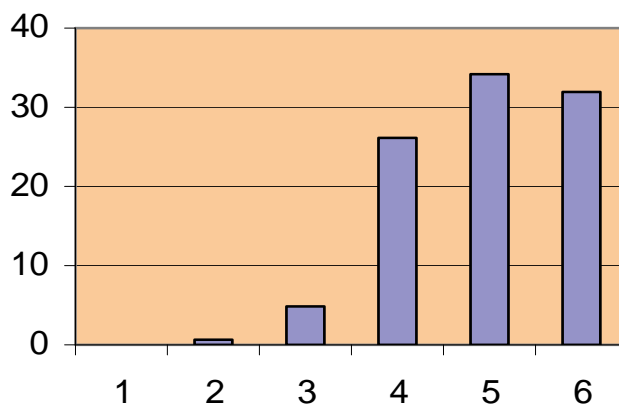
**Results of Satisfaction Surveys undertaken in 2010 showed a generally high level of satisfaction by students, staff and parents.**



*Percentage of Parents' satisfaction levels on a scale of 1-6, with 6 as the highest possible score.*



*Percentage of Student satisfaction levels on a scale of 1-6, with 6 as the highest possible score, (Grade 4 – Y12.).*

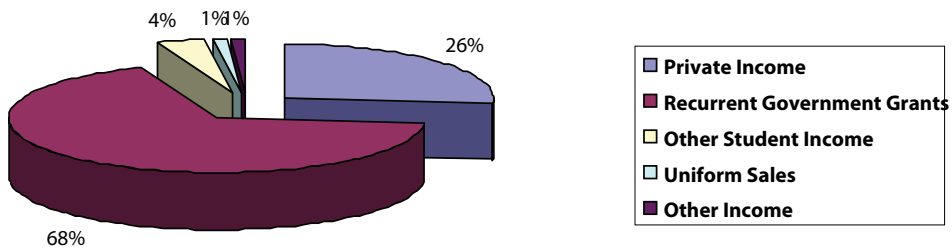


*Percentage of Staff satisfaction levels on a scale of 1-6, with 6 as the highest possible score.*

# Summary Financial Information 2010...

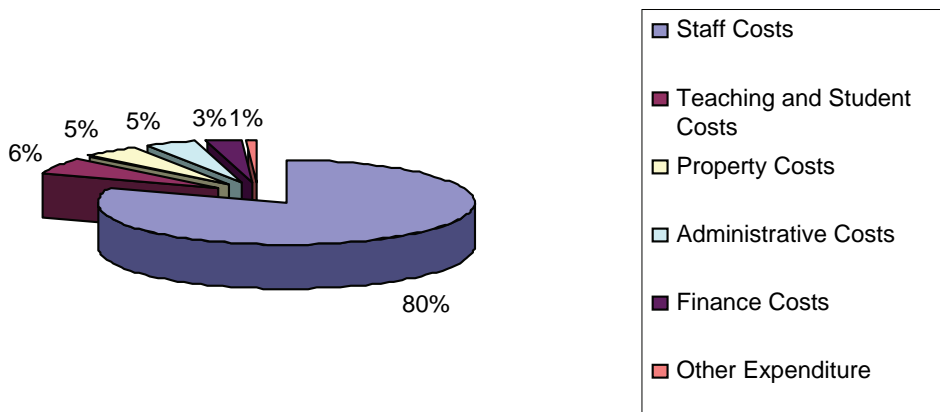
## Income

**Total Operating Income      \$3,472,471**



## Expenditure

**Total Operating Expenditure      \$3,233,521**



**Operating Surplus 6.9%**